



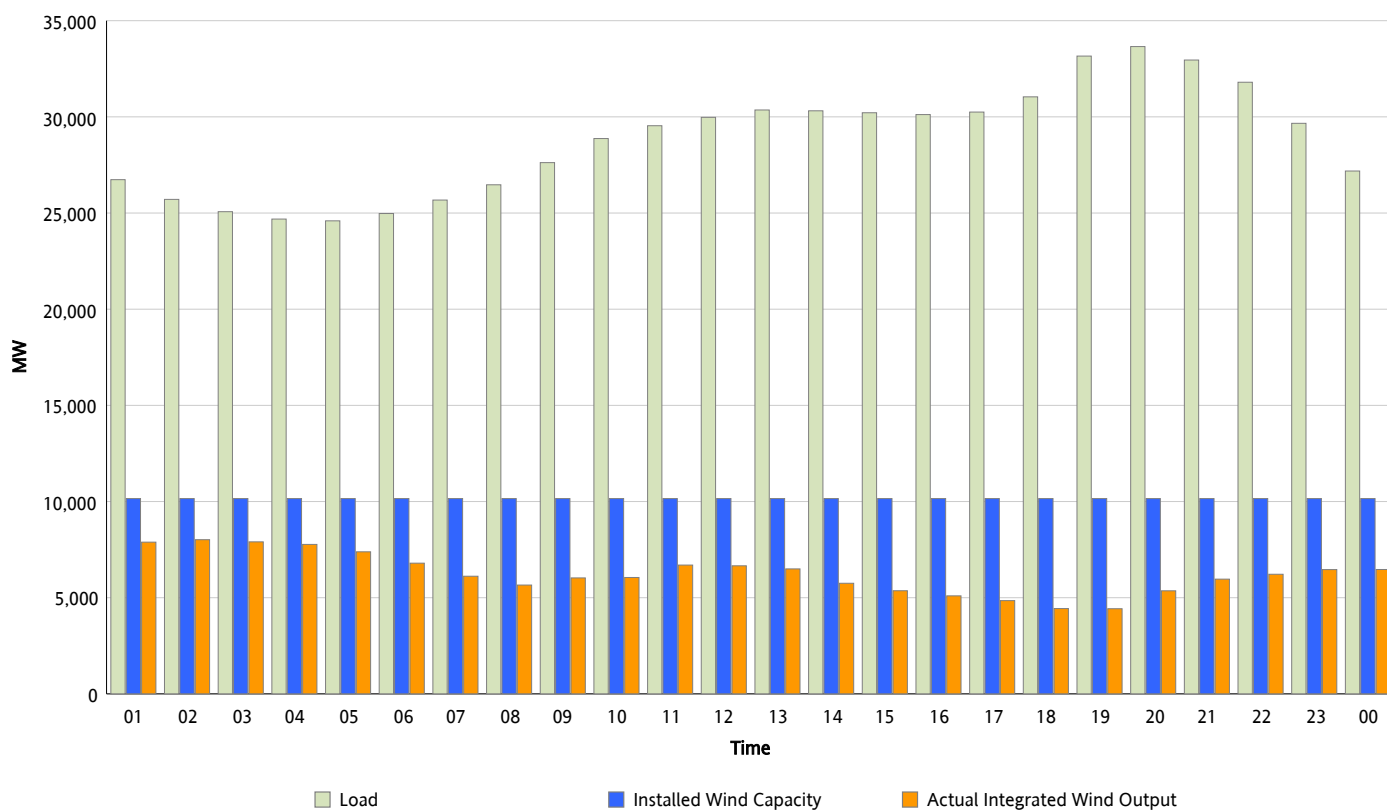
## ERCOT Grid Operations

### Wind Integration Report : 01/27/2013

Peak Load	33,655 MW
Load Peak Hour (HE)	20
Wind Over Peak	5,359 MW
Wind Record 12/25/12	8,638 MW
Max Wind Value*	8,171 MW
Wind Peak Time	01:05
Wind Integration %	31.3 %

#### Hourly Average Actual Load vs. Actual Wind Output

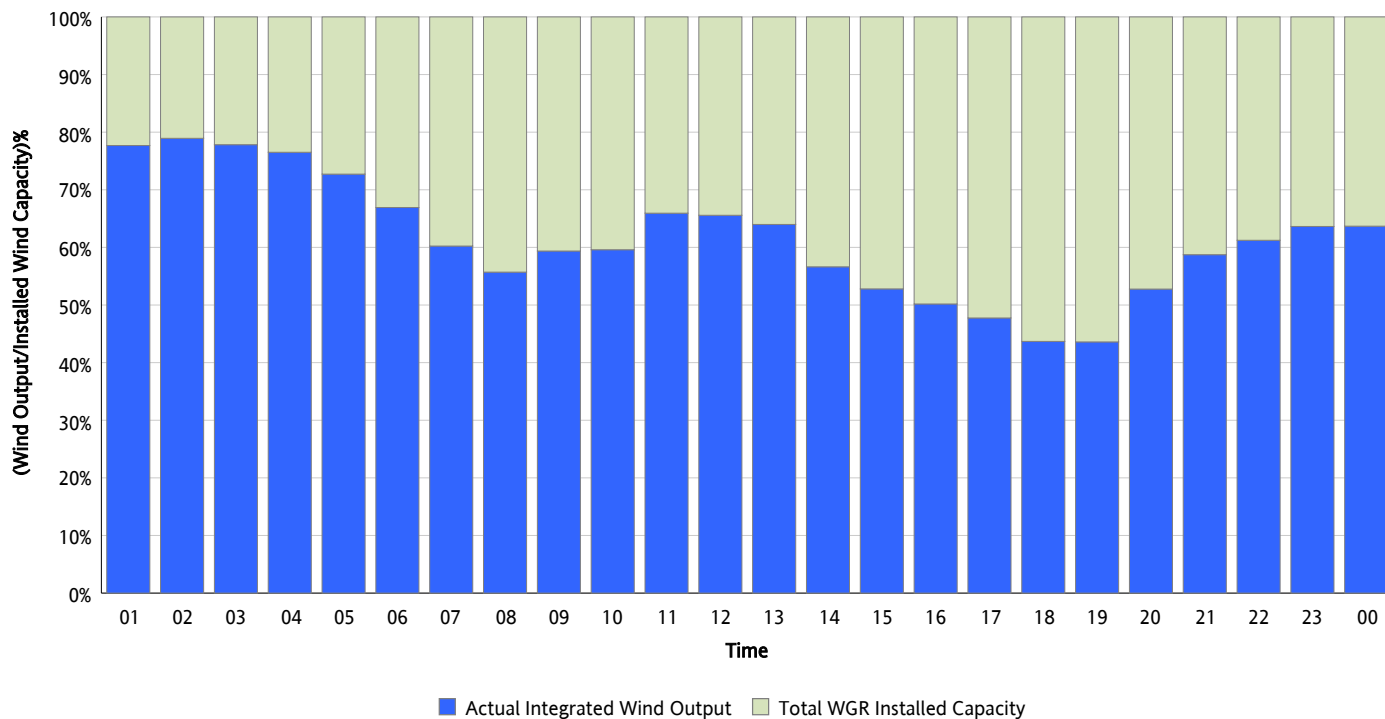
01/27/2013



\* Wind Record and Wind Max represent instantaneous values and the rest of the values are integrated over the hour

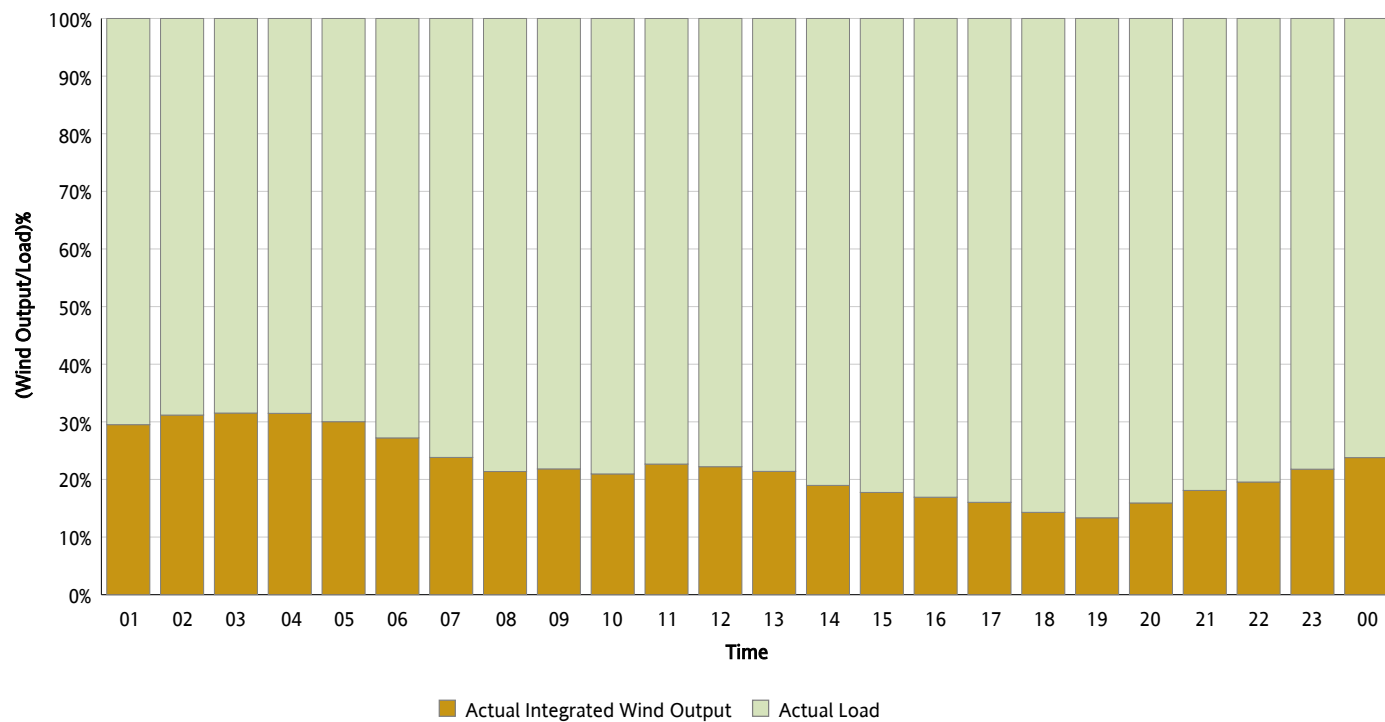
## Actual Wind Output as a Percentage of the Total Installed Wind Capacity

01/27/2013



## Actual Wind Output as a Percentage of the ERCOT Load

01/27/2013



## ERCOT Load vs. Actual Wind Output

01/20/2013 - 01/27/2013

